



®



T 8056

Spare Parts

P/N: TEEWH521A3 Rev.A²

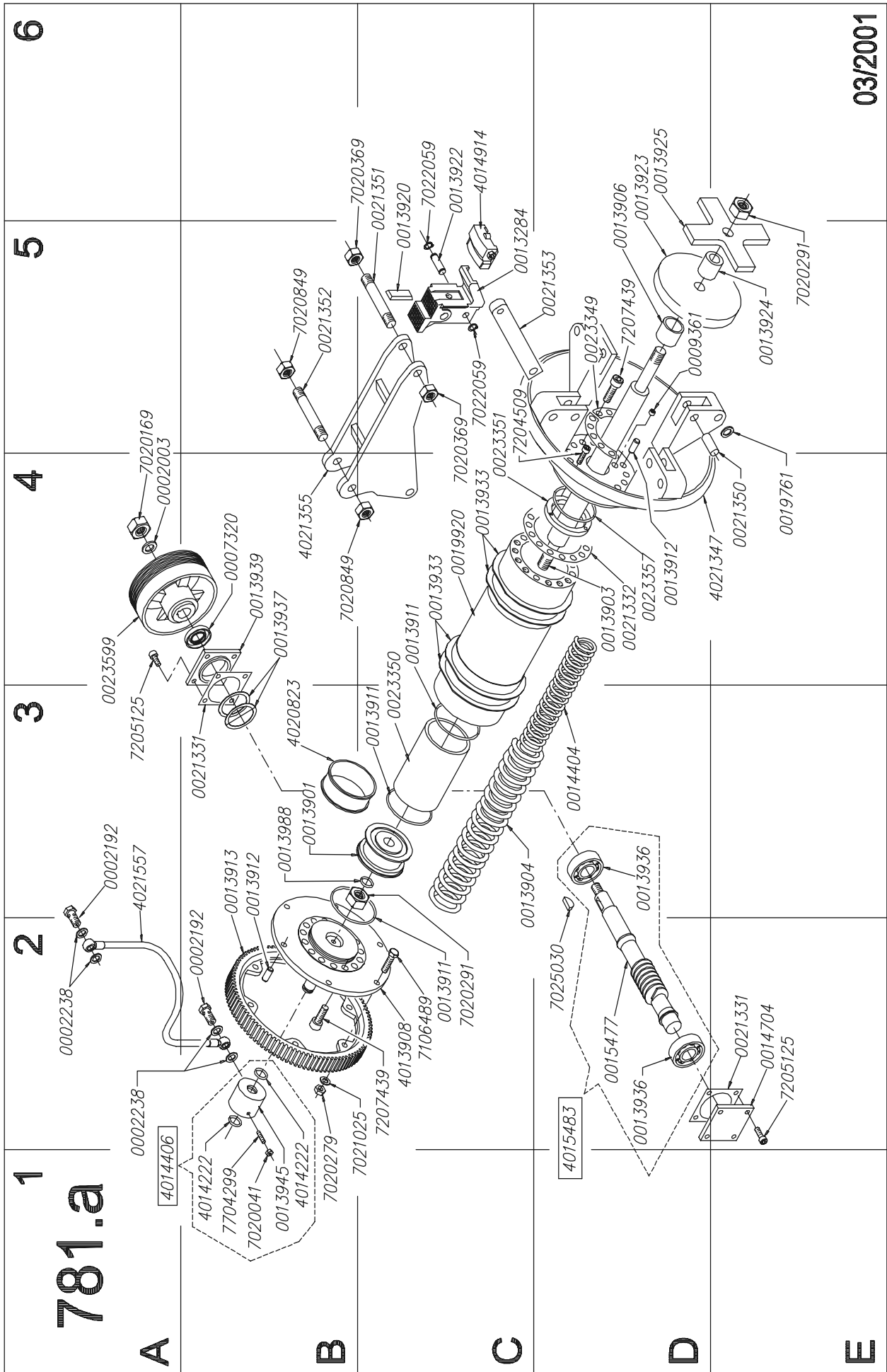




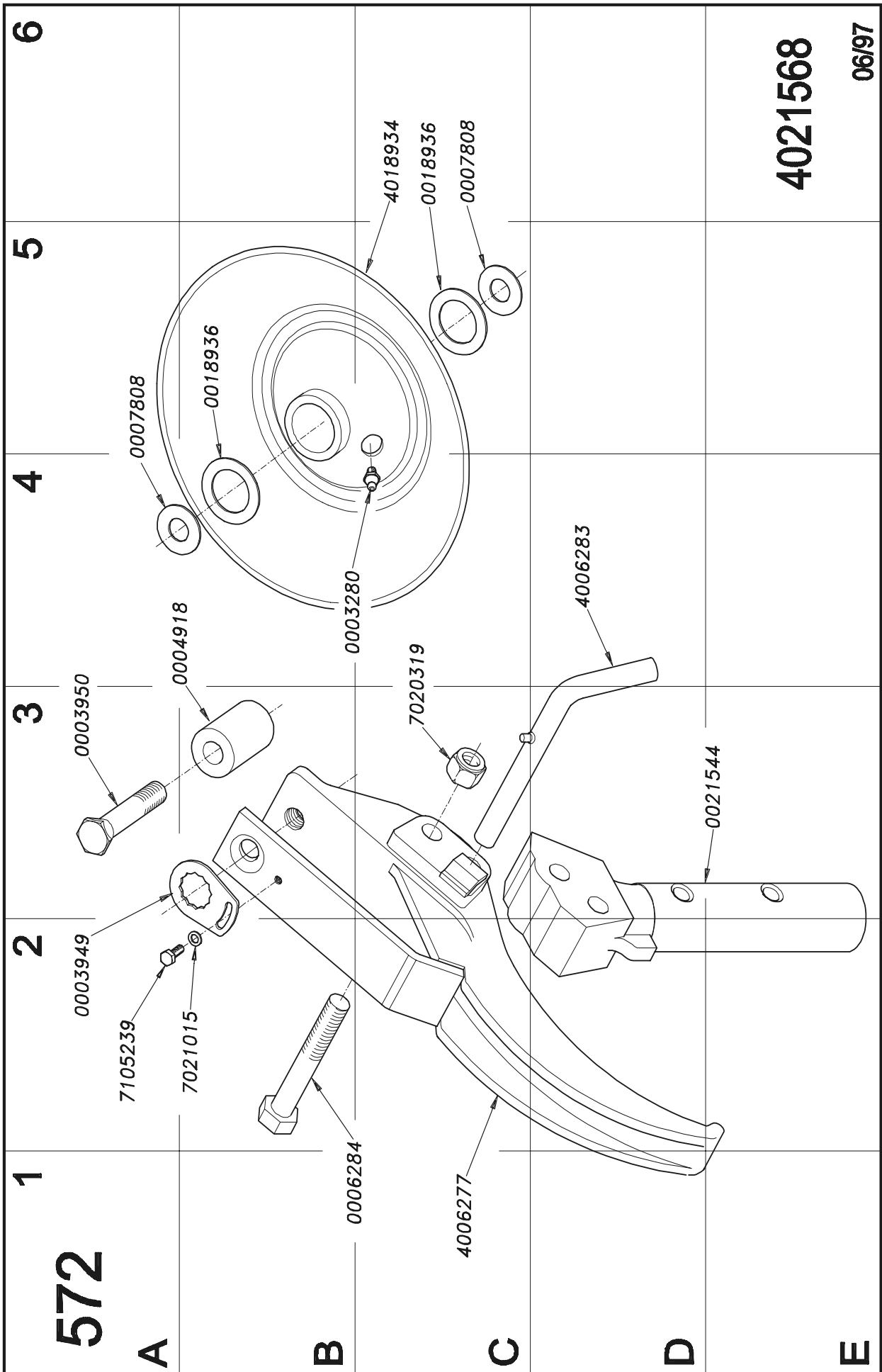
**THIS PART IS FOR EXCLUSIVE USE OF QUALIFIED
PERSONNEL FOR MAINTENANCE AND SERVICE PURPOSES.**

191-a-April-05

ST0000000 - BOLD TYPE CODES MEANS: SUGGESTED SPARE PARTS

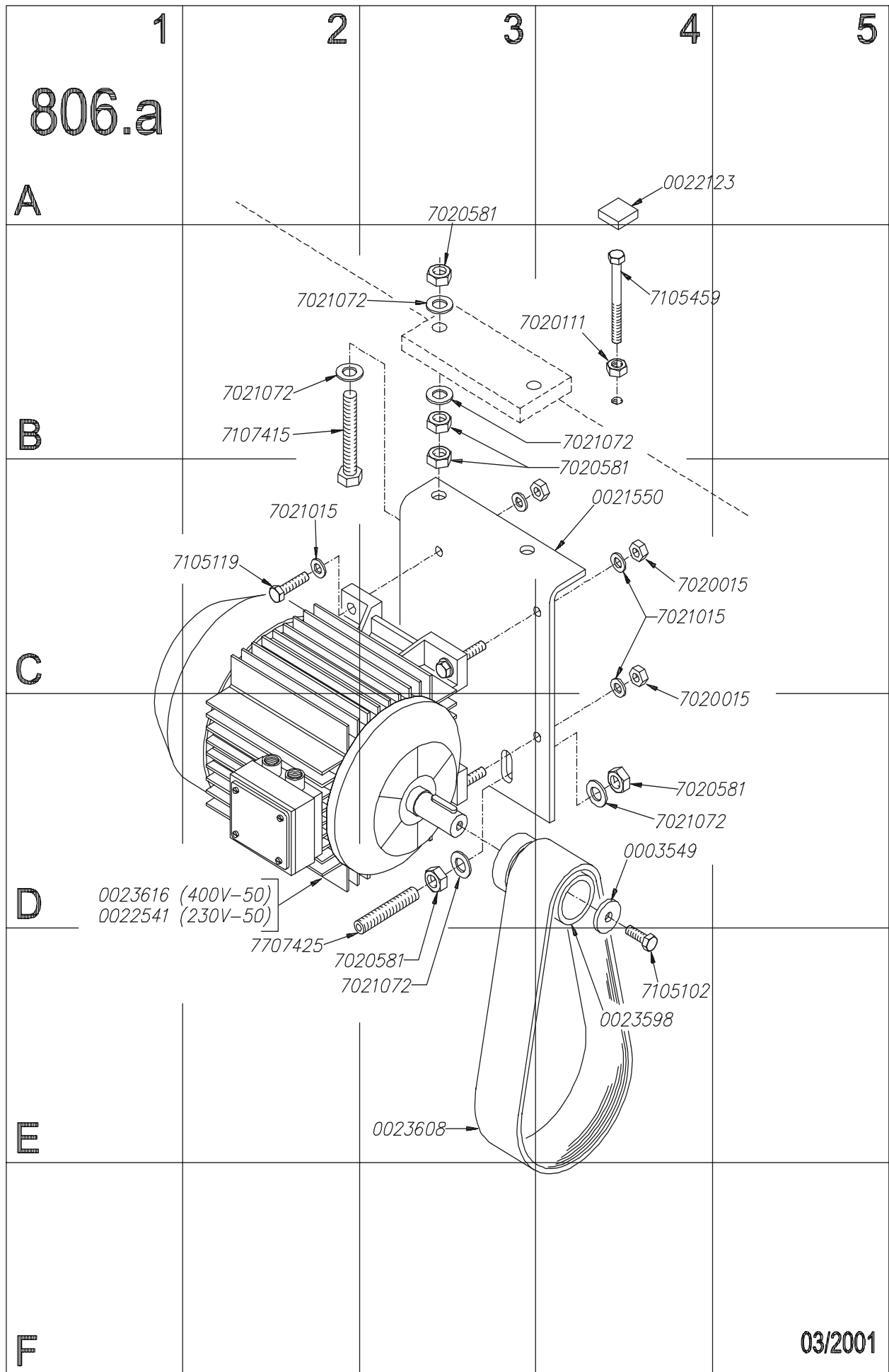


03/2001

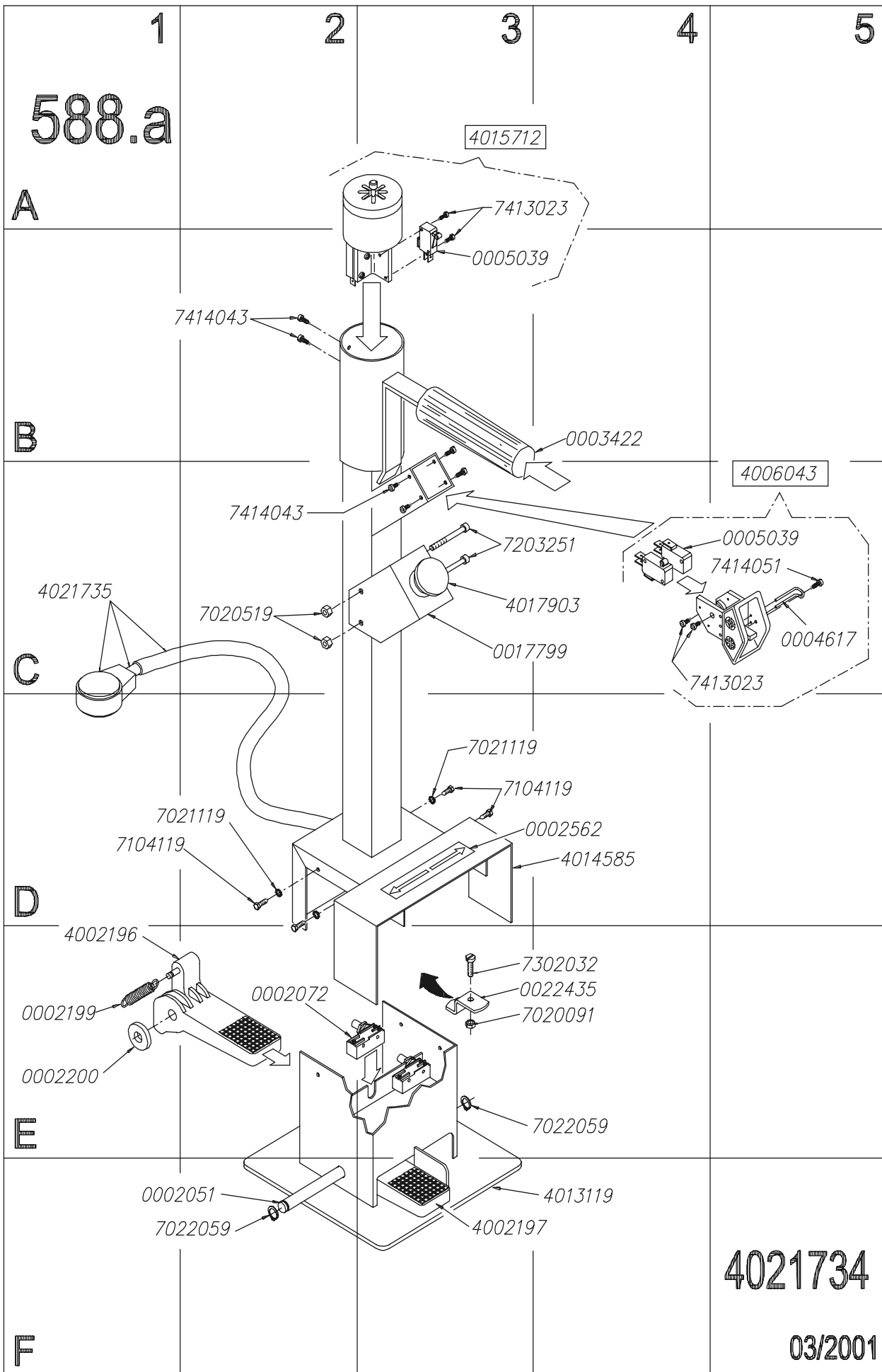


4021568

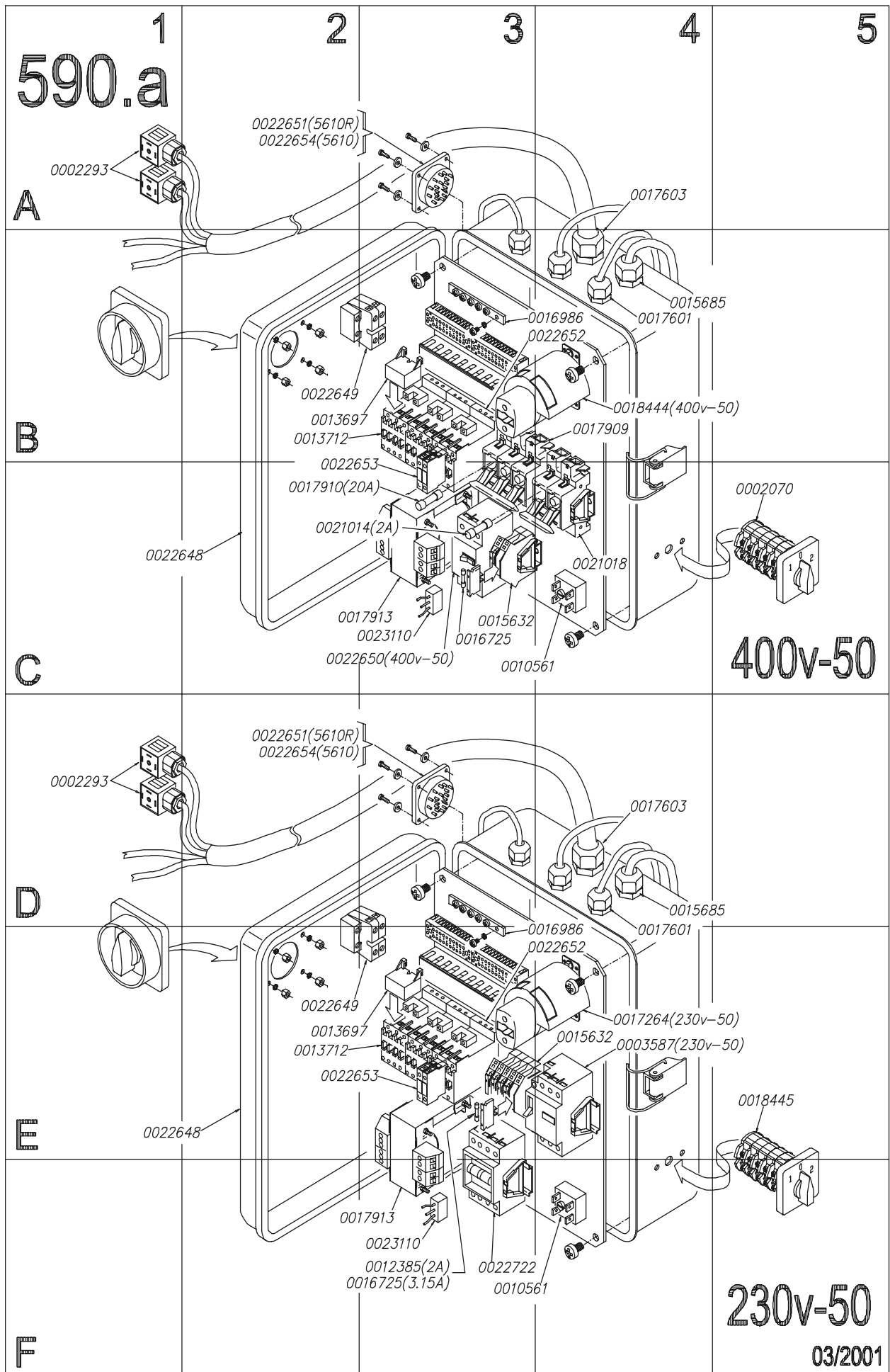
06/97



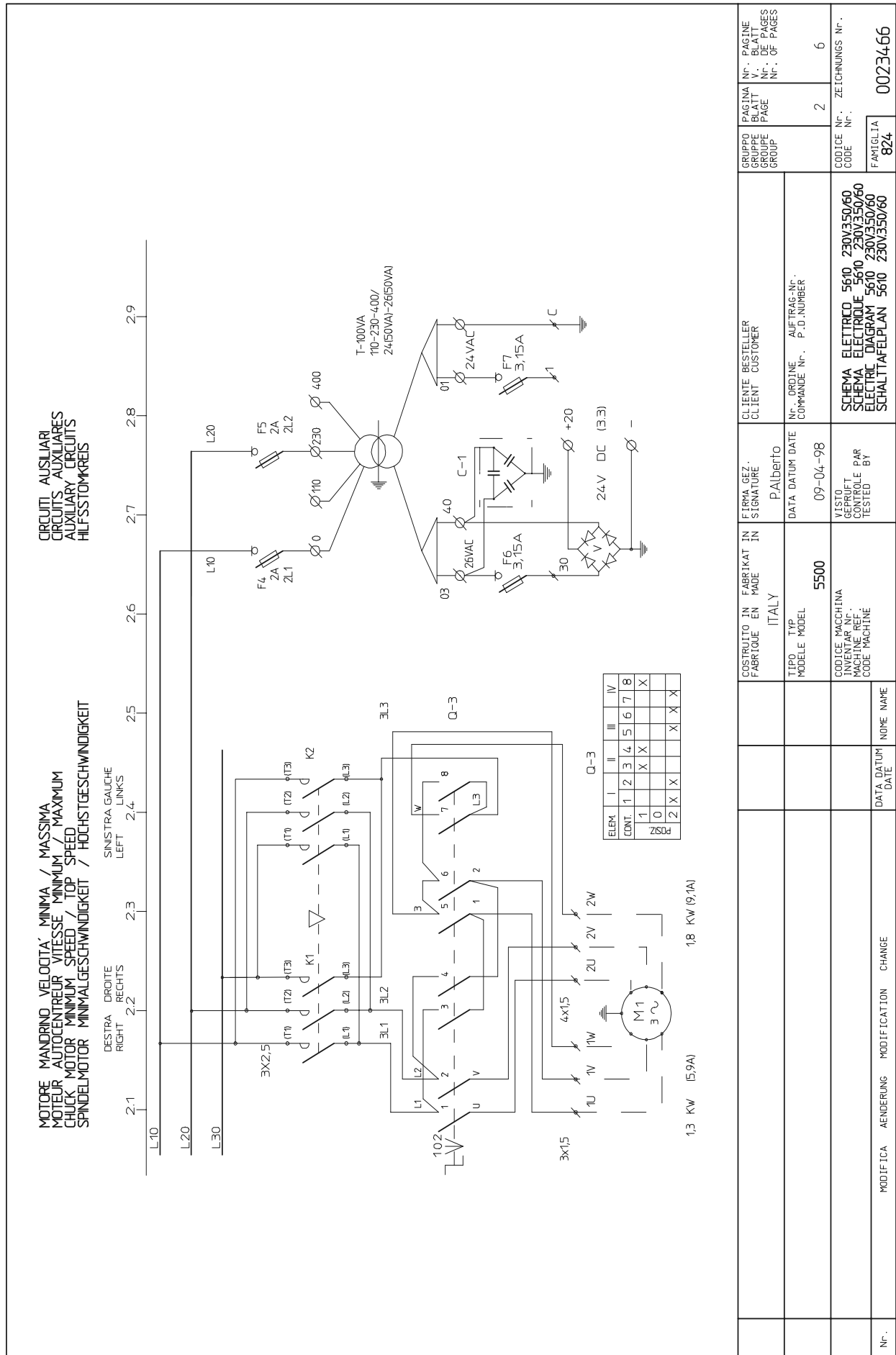
191-a-April-05



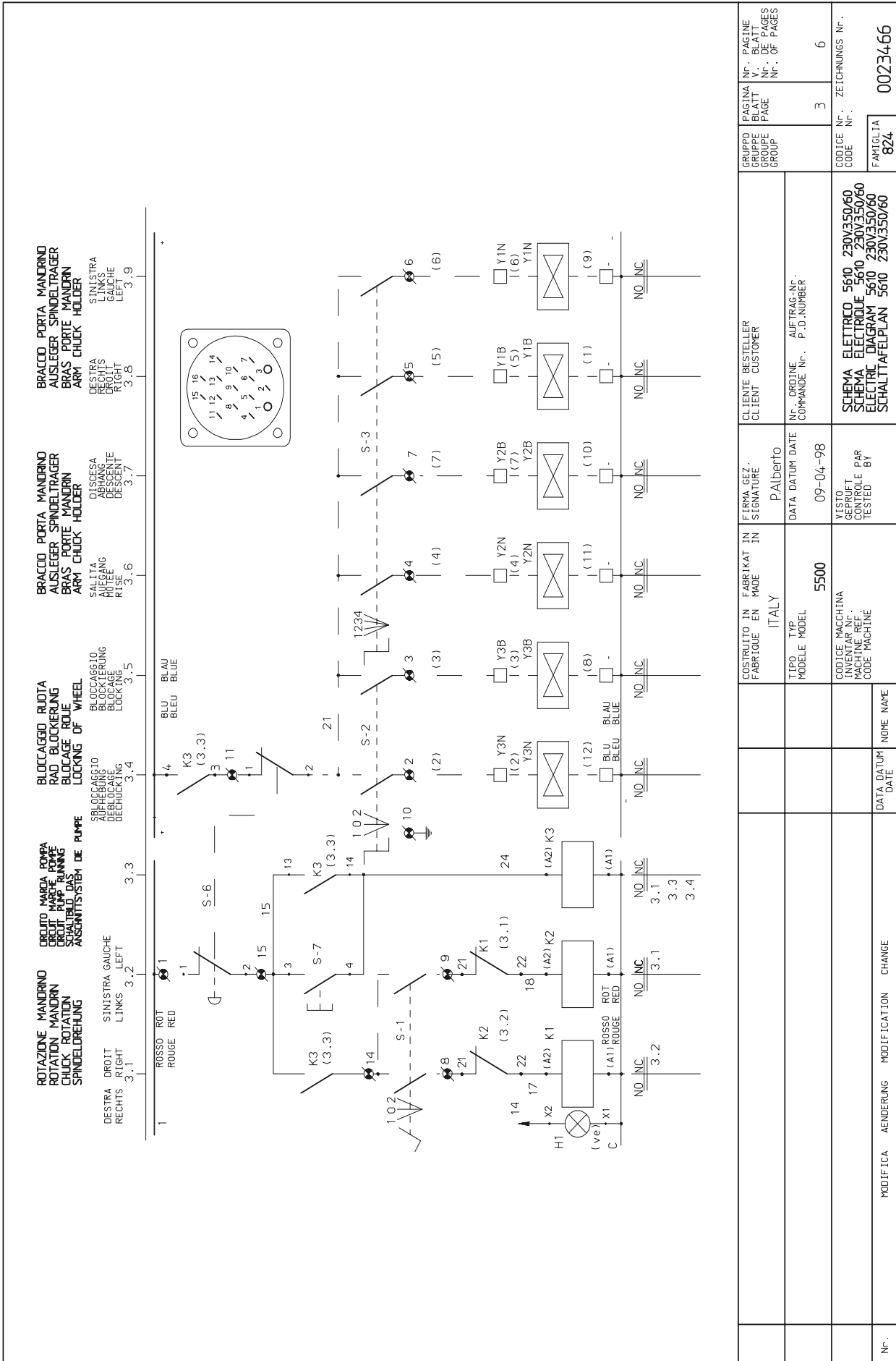
191-a-April-05



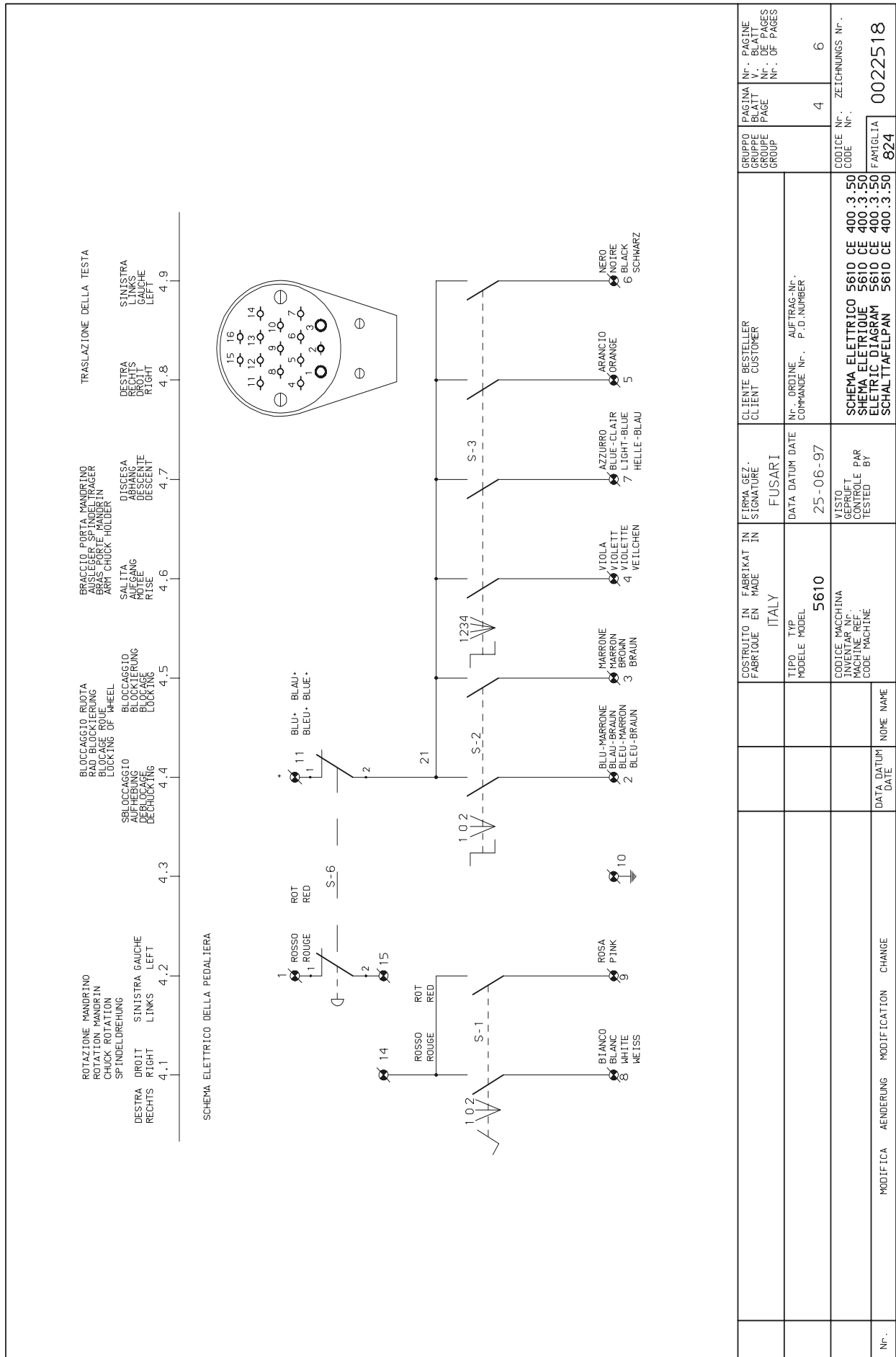
191-a-April-05



	GRUPPO BLATT GRUPPE GROUP	PAGINA BLATT PAGE PAGE	N° PAGINE V. BLATT N° DE PAGES N° OF PAGES
		2	6
	CLIENTE BESTELLER CLIENT CUSTOMER	N° ORDINE COMMANDE N° P.O. NUMBER	
	FIRMA GEZ SIGNATURE	DATA DATUM DATE	
	P. Alberto	09-04-98	
	COSTRUITTO IN FABRILCO EN MADE	TIPO MODEL	
	ITALY	5500	
		CODICE INVENTAR N° MACHINE REF. CODE MACHINE	
		SCHEMA ELECTRIC ELECTRIC SCHALT TAFELPLAN	
		SCHEMA ELECTRIC ELECTRIC SCHALT TAFELPLAN	
Nr.	MODIFICA ÄNDERUNG MODIFICATION CHANGE	FAMILIA 824	
		CODICE N° ZEICHNUNGS N° 0023466	



GRUPPO GRUPPE GROUP	PAGINA BLATT PAGE	N°. PAGINE V. BLATT N°. OF PAGES	CLIENTE BESTELLER CUSTOMER	FIRMA GEZ. SIGNATURE	PAIDERTO	DATA DATUM DATE	09-04-98	COSTRUITO IN FABRIKAT IN MADE IN	ITALY	TIPO TYP MODEL	5500	CODICE INVENTAR N°. / MACHINE REF. / CODE MACHINE	DATA DATUM DATE	NOME NAME	
				N°. ORDINE COMMANDE N°. / P.D. NUMBER	NO INC	NO INC	NO INC		NO INC		NO INC				NO INC
			SCHEMA ELETTRICO 5610 230V/350/60 SCHEMA ELECTRIQUE 5610 230V/350/60 ELECTRIC DIAGRAM 5610 230V/350/60 SCHALTTELFELPLAN 5610 230V/350/60												
Nr.	MODIFICA AENDERUNG MODIFICATION CHANGE														





Nr.	POS.	TYP. REF.	Q.TA. STUCK. Q.TE. Q.TY	DESCRIPTION	STIGLA E. NORMA TYP. UND NORRMENBEZEICHNUNG REF. ET. NORMATIVE	PRODOTTORE/FORNITORE HERSTELLER/LIEFERANT PRODUCER /SUPPLIER	DATA DATUM DATE	INVENTAR N° MACHINE REF. CODE MACHINE	YISTO GEPUFT CONTROLLE PAR TESTED BY	5610 CE 400.3.50 5610 CE 400.3.50 5610 CE 400.3.50	SCHEMA ELETRICO SHEMA ELECTRQUE ELECTRIC DIAGRAM SCHALTTRAFELPAN	824	FAMIGLIA	0022518	ZEICHNUNGS Nr.	6	PAGINA N° PAGINE V. - BLATT Nr. - DE PAGES
2.7	T	1		TRASFORMATORE MONOFASE 100VA CE EINPHASIGE TRANSFORMATOR 100VA CE TRANSFORMATEUR MONOPHASE 100VA CE MONOPHASE TRANSFORMER 100VA CE	110-230-400/24(50)-26(50) CON SCHERNO	ARES											
	C-1	1		CONDENSATORE MASITIRO CONDENSATOR FOR FILL-TRE SUPPRESSOR CAPACITOR	PZB 300MC13	EVOX RIFA											
2.6	V	1		PONTE DI RADDOPPIAZZATORI 25A 400V GLUCHRICHTERBRUECKE 25A 400V PONT CONVERTITEUR 25A 400V LINK-CONVERTER 25A 400V	KBPCC2508	MIC											
2.6	F6	F7	2	FUSIBILE 5x20 3.15A RAPIDO FUSIBLES SICHERUNG 5x20 3.15A RAPIDE FUSE 5x20 3.15A QUICK	5x20 3.15A 250V VETRO	WEBER											
2.6	F4	F5	2	FUSIBILE CH 10.3X38 2A RAPIDO SCHMELZSICHERUNG CH 10.3X38 2A SCHNEL FUSIBLE CH 10.3X38 2A RAPIDE FUSE CH 10.3X38 2A QUICK	10.3X38 2A	WIMEX											
2.6	F6	F7	2	PORTAFUSIBILE PORTE FUSIBILE FUSEHOLDER	VLO-4	CABUR											
2.6	F4	F5	1	PORTAFUSIBILE BIPOLARE 10X38 SCHMELZSICHERUNGSHALTER FUSEHOLDER		WIMEX											
2.3	T	1		INTERLLOCCO MECCANICO PER CONTATTORI SCHRAUBEN ZWISCHENSCHLÜCK DER KONTAKTGEBER MECHANICAL SECURITY FOR METERS	3TK4 081-1A	SIEMENS											
2.2	K-1	K-2	2	CONVATTORE TRIPOLARE 24VAC 50/60HZ 5.5KW DREI-PHASE KONTAKTGEBER 24VAC 50/60HZ 5.5KW COMPUTER 3 POLAIRES 24VAC 50/60HZ 5.5KW THREE-POLAR METER	3TF3101-0AC2	SIEMENS											
2.2	M	1		MOTORE PER RIDOTTURE SPINDLE MOTOR CHUCK MOTOR	400V.3.50HZ-1.3/1.8KW 3.1/4.7A-2/4 POLI-BS	EL-PRO.M											
2.2	0-3	1		COMVATTORE D1 POLARITA' 16A KOMMUTATOR POLARITÄT 16A COMVATTUREUR DE POLARITE 16A SWITCH ASSY FOR POLE CHANGE 16A	A 1609 PL1	BREMAS											
1.6	F1	F2	F3	FUSIBILE 10x38 20A AM 500V SCHMELZSICHERUNG 10x38 20A AM 500V FUSE 10x38 20A AM 500V	5400625-25AM	WIMEX											
1.6	F1	F2	F3	PORTAFUSIBILE TRIPOLARE 3x32A DREI-PHASE SCHMELZSICHERUNGSHALTER 3x32A PORTE FUSIBILE 3 POLAIRES 3x32A THREE-PHASE FUSEHOLDER 3x32A	545-0104 3NM 7030	WIMEX SIEMENS											
1.4	M	1		MOTORE PER CENTRALINA IDRAULICA MOTOR MIT HYDRAULISCHEN PUMPE HYDRAULIC MOTOR	400V.3.50HZ-1.5KW-3.9A 4POLI-B14	EL-PRO.M											
1.4	K-3	1		CONVATTORE TRIPOLARE INA-24V AC 60/60 HZ DREI-PHASE KONTAKTGEBER INA-24V AC 30/60 HZ COMPUTER 3 POLAIRES INA-24V AC 60/60 HZ THREE-POLAR METER INA-24V AC 60/60 HZ	3TF3010-0AC2	SIEMENS											
1.4	0-2	1		SALVAMOTORE MAGNETOTERMICO TRIPOLARE 4/6.3A DREI-PHASE THERMOMAGNETISCHEN STROMBRECHER SECURITE THERMIQUE 3 POLAIRES THREE-PHASE MAGNETIC THERM CIRCUITBREAKER	3RVU00-1EA	SIEMENS											
1.2	0-1	1		SCHALTER TÜRER BLOCKIERUNG 3x16A INTERRUPTEUR BLOCAGE PANNEAU 3x16A SWITCH FOR DOOR LOCKING 3x16A	A 1603 LNZ	BREMAS											
POS.	STIGLA TYP. REF.	Q.TA. STUCK. Q.TE. Q.TY	DENOMINAZIONE BENENNING DESCRIPTION		STIGLA E. NORMA TYP. UND NORRMENBEZEICHNUNG REF. ET. NORMATIVE	PRODOTTORE/FORNITORE HERSTELLER/LIEFERANT PRODUCER /SUPPLIER	DATA DATUM DATE	INVENTAR N° MACHINE REF. CODE MACHINE	YISTO GEPUFT CONTROLLE PAR TESTED BY	5610 CE 400.3.50 5610 CE 400.3.50 5610 CE 400.3.50	SCHEMA ELETRICO SHEMA ELECTRQUE ELECTRIC DIAGRAM SCHALTTRAFELPAN	824	FAMIGLIA	0022518	ZEICHNUNGS Nr.	6	PAGINA N° PAGINE V. - BLATT Nr. - DE PAGES



N°.	POS.	Q.TA. STÜCK G.TE. Q.TY	DENOMINAZIONE BENENNING DESCRIPTION	SIGLA E NORMA TYP- UND NORMENBEZEICHNUNG REF. ET NORMATIVE REF. AND NORM	FABBRICAZIONE FABRIKAT IN MADE IN	FIRMA GEZ. SIGNATURE	DATA DATUM DATE	VISTO GEPÜFT CONTROLÉ TESTED BY	CODICE INVENTAR N°. MACHINE REF. CODE MACHINE	LISTA COMPONENTI MUSTER-STÜCKLISTE LISTE COMPOSANTES SYSTEME HYDRAULIQUE COMPONENTES HYDRAULIC SYSTEM	GRUPPO GRUPPE GROUP	PAGINA N°. V. BLATT N°. DE PAGES PAGE	ZETCHNUNGS N°. N°. OF PAGES
26	1		TUBO FLESSIBILE SCHLAUCH TUYAU FLEXIBLE FLEXIBLE TUBE	SAE 100 R7 DN1/4"	OLMARK RUDFLEX								
25	1		VALVOLA DI NON RITORNO A PIOTATA DOPPELWIRKENDEN ZYLINDER VANNE DE NON RETOUR AVEC ENTANGLEMENT NON RETURNING VALVE WITH NARROWING		FLUID-PRESS S								
24	1		TUBO FLESSIBILE SCHLAUCH TUYAU FLEXIBLE FLEXIBLE TUBE	SAE 100 R7 DN1/4"	OLMARK RUDFLEX								
23	1		TUBO FLESSIBILE SCHLAUCH TUYAU FLEXIBLE FLEXIBLE TUBE	SAE 100 R7 DN1/4"	OLMARK RUDFLEX								
22	1		VALVOLA DI NON RITORNO CON STROZZAMENTO VENTIL OHNE RUECKGANG MIT VERENGUNG VANNE DE NON RETOUR AVEC ENTRANGLEMENT NON RETURNING VALVE WITH NARROWING	71112919 8004-26929	COMATROL								
21	1		VALVOLA DIREZIONALE VANNE DIRECTIONNELLE VALVE WITH COURSE		COMATROL								
14	1		CILINDRO A DOPPIO EFFETTO DOPPELWIRKENDE ZYLINDER VERIN A DOUBLE EFFECT CYLINDER AT DOUBLE EFFECT		I. S. I. STILFRENI								
13	1		TUBO IN FERRO EISEN RODDER ROD IRON		NUOVA DGP SORA SNC								
12	1		VALVOLA DIREZIONALE EINSEITIGE VENTIL VANNE DIRECTIONNELLE VALVE WITH COURSE		COMATROL								
11	1		VALVOLA DIREZIONALE EINSEITIGE VENTIL VANNE DIRECTIONNELLE VALVE WITH COURSE	71112919 + 800422719	COMATROL								
07	1		FILTRO FILTER FILTRE	HP0261425AN	MP FLTRI								
06	1		VALVOLA UNIDIREZIONALE EINSEITIGE GERICHTETE VENTIL VANNE UNIDIRECTIONNELLE VALVE WITH ONE COURSE		HYDR-APP								
05	1		LIMITATORE DI PRESSIONE DRUCK REDUKTOR LIMITEUR DE PRESSION LIMITER OF PRESSURE		HYDR-APP								
04	1		MOTORE ELETTRICO ELEKTRISCHEN MOTOR ELECTRIC MOTOR ELECTRIC MOTOR	400V 50HZ HP18/25	ELPROM TECNOMOTORI								
03	1		POMPA IDRAULICA HYDRAULISCHEN PUMPE POMPE HYDRAULIQUE HYDRAULIC PUMP	MCL-VIB-PP-MMI-TY05-FY	HYDR-APP								
02	1		FILTRO FILTER FILTRE	MCL-VIB-PP-MMI-TY05-FY	HYDR-APP								
01	1		SERBATOIO TANK RESERVOIR	MCL-VIB-PP-MMI-TY05-FY	HYDR-APP								
3			AGGIUNTO FILTRO N°07 A PARTIRE DA 01-01-2000 ADDED FILTER N°07 FROM 01-01-2000 RAJOUTÉ FILTRE N°07 A PARTIR DE 01-01-2000 ZUGEFÜGTE FILTER N°07 VON 01-01-2000		PRODOTTORE/FORNITORE HERSTELLER/LIEFERANT PRODUCER /SUPPLIER								
2			PARTICOLARE 05 ERA TARATO A 190 bar ; 180 bar A PARTIRE DA LUGLIO 1998		01-01-00 P.Alberto								
1			SOSTITUISCE LO SCHEMA COD.0021918 DEL 19-05-97 A PARTIRE DALLA MATRICOLA N°04-982944		01-07-98 P.Alberto								
			MODIFICA AENDERUNG MODIFICATION CHANGE		DATA DATUM DATE	NOVE NAME							



(BLANK PAGE)



(BLANK PAGE)



®

USA

John Bean
309 Exchange Avenue
Conway, Arkansas 72032
Tel.: (800) 362-8326 or (501) 450-1500
Fax: (501) 450-1585

CANADA

John Bean
6500 Millcreek Drive
Mississauga, Ontario
Canada L5N 2W6
Tel: (905) 814-0114
Fax: (905) 814-0110

LATIN AMERICA

International Equipment Group
309 Exchange Avenue
Conway, Arkansas 72032
Tel.: (501) 450-1568
Fax: (501) 450-2086

Notice: The information contained in this document is subject to change without notice. **John Bean** makes no warranty with regard to this material. **John Bean** shall not be liable for errors contained herein or for incidental consequential damages in connection with furnishings, performance, or use of this material.

This document contains proprietary information which is protected by copyright and patents. All rights are reserved. No part of this document may be photocopied, reproduced, or translated without prior written consent of **John Bean**.



is a registered trademark of John Bean and Snap-on Incorporated.