



PARTS BREAKDOWN

SPOA30/SPOA40/SPO40 E, M & i Series

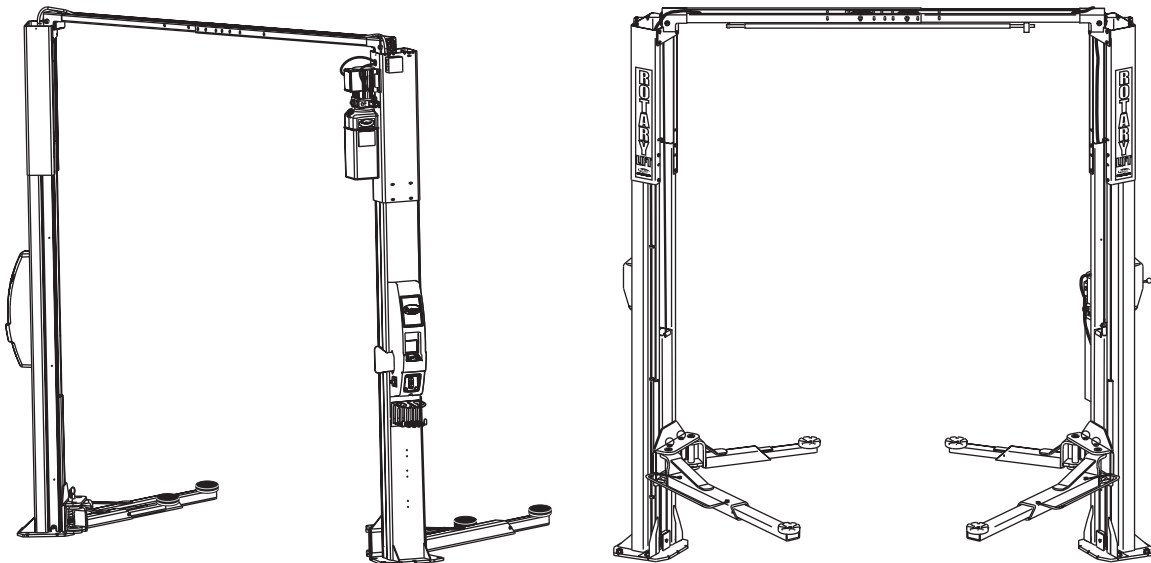
(500 Series)

Two Post Surface Mounted Lifts

SPOA30 Series Capacity: 3,100kg (775 kg per arm)

SPOA40 Series Capacity: 4,000kg (1,000kg per arm)

SPO40 Series Capacity: 4,000kg (1,000kg per arm)



IMPORTANT: When ordering parts or requesting service always give exact model and power unit serial number. Model number is shown on nameplate attached to power unit column. Power unit serial number is located on side of power unit.

OWNERS RECORD
Complete information at right and keep in a safe place.

Date Installed _____

Installed in Bay # _____

Power Unit Serial # _____

Power Unit Model # _____

Lift Serial # _____

Lift Model # _____

NOTE: For replacement parts -See your nearest Rotary Parts Distributor.

PB 2-32-24
Rev. H 11/15/2004

M SERIES PARTS LIST

1	L.H. Column	N752		39	Equalizer Cables	
2	R.H. Column	N755			SPOA30	N384
3	Column Extension				SPOA30 EH-1 MODEL	N385
	Standard Height	N470			SPOA30 EH-2 MODEL	N386
	EH-1 MODEL	N471			SPOA40	N372
	EH-2 MODEL	N472			SPOA40 EH-1 MODEL	N378
	EH-4 MODEL (SPO40 only)	N474			SPOA40 EH-2 MODEL	N373
4	Carriage Yoke	N822			SPO40	N374
5	Arm Pin	N2154			SPO40 EH-1 MODEL	N379
6	3/8"-16NC x 3/4" Long Carriage Bolts	N/A			SPO40 EH-2 MODEL	N375
7	71" Hydraulic Cylinder	N382			SPO40 EH-4 MODEL	N376
*8	Power Unit			40	Carriage Bumper	FA950
	1Ø (SPOA30) (F model)	*P1073-3		41	Locking Latch Cable	FJ7595-1
	1Ø (SPOA40/SPO40) (F model)	*P1073-2			SPO40 EH-4 Model	FJ7600
	3Ø (SPOA30) (D model)	*P1430		42	Cable Guide	N618
	3Ø (SPOA40/SPO40) (D model)	*P1071-2		43	3/8"-16NC Flanged Locknut	40664
	3Ø (SPOA30) (T model)	*P1436		44	Sheave Shaft	FJ7444-8
	3Ø (SPOA40/SPO40) (T model)	*P1438		45	1/4"-20NC x 3/4" HHCS Grade 5	40104
9	Power Unit Hose	FJ837		46	Cable End Bracket	N619
10	5/16"-18NC x 1-1/2" HHCS	40238		47	Hose Clip	N383
11	5/16" External Tooth Lockwasher	40854		48	Front Shim	FJ7659-3
12	5/16"-18NC Hex Nut	40670		49	Horse Shoe Shim	FJ716-6
13	Actuator Pin Handle	FJ7985-1		50	Tee	FJ7668
14	Actuator Pin	N121-1		51	N/A	N/A
15	Retaining Ring	N119-3		52	Photosensor Plug	FA5930-2
16	Arm Restraint Spring	FJ7656-2		53	1/4"-20NC Flanged Locknut	40641
17	N/A	N/A		54	Spacer	FJ7871
18	Carriage Bumper (152mm Lg.)	FA941		55	Limit Switch Assembly	N412
19	Arm Restraint Pawl	N2121		56	1/4" External Tooth Lockwasher	40779
20	Approach Bumper (457mm Lg.)	FJ7391-1		57	3/8" External Tooth Lockwasher	40845
21	5/8"-11NC Hex Nylon Insert Lock Nut	40780		58	1-1/2" Lg. Spring Pin	14427
22	Truarc #5304-75 Klipring for 3/4" Shaft	41411		59	1/4"-20NC x 1" HHCS Grade 5	40108
23	Sheave	N377		60	Left Toe Guard	N137-1
24	1/4"-20NC Hex Nut	40627		61	Right Toe Guard	N138-1
25	Sheave Cover	N119-1		62	Limit Switch	N411-1
26	1/4"-20NC x 3/8" Lg. PHMS Plated (2 pcs.)	40063		63	Push Nut	FC5209
27	Slider Block	FJ7360		64	L.H. Overhead (Outer)	N480-1
28	20mm Concrete Anchor (10 req'd)W140210			65	R.H. Overhead (Inner)	N481-1
29	1-1/2"O.D. x .760-.770" I.D. x .045" Thk. Mach. Bushing	41388		66	Bleeder Screw	N/A
30	1/4"-20NC x 2-3/4" Hex Head Bolt40114			67	Adapter Plate	FA7132-2
31	1/4"-20NC Nylon Insert Locknut41423			68	5mm-.80 x 8mm lg. Flat Head MS	FA7152-1
32	1/4" Type A Plain Flat Washer			69	Control Panel	FA7168
33	Switch Bar Assembly			70	#8-32NC x 1/2" Lg. Pan Head Tapping Screw	FA7152-2
	SPOA30	N415		71	Overhead Mounting Bracket	N439
	SPOA40/SPO40	N467				
34	Spotting Wheel Dish Kit	FF729				
35	N/A	N/A				
36	3/8"-16NC x 3/4" Long Flanged HHCS	40134				
37	Slider Block Shim	N115				
38	Overhead Hose					
	SPOA30	FJ839				
	SPOA30 EH-1 MODEL	FJ842				
	SPOA30 EH-2 MODEL	FJ843				
	SPOA40 and SPO40	FJ839				
	SPOA40 and SPO40 EH-1 MODEL	FJ842				
	SPOA40 and SPO40 EH-2 MODEL	FJ843				
	SPO40 EH-4 MODEL	FJ845				

*Notes: F, D, or T Model?

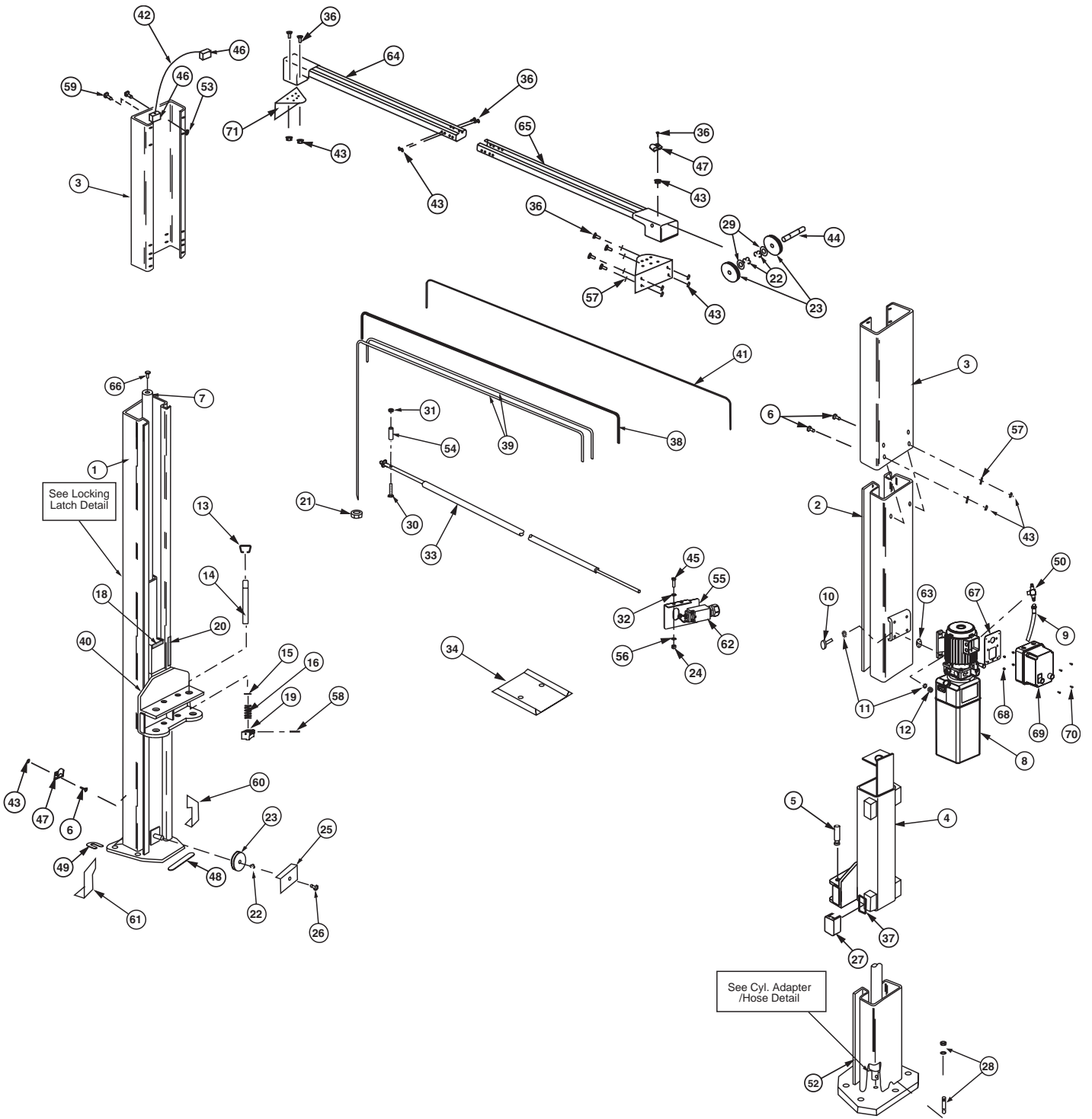
To find out if you have a **F, D, or T** model Power Unit look at the **4th letter from the end** of your lift model number.

EXAMPLE: SPOA30**MD**585 would be a **D Model**.

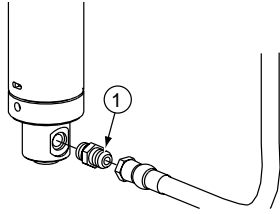


Model number can be found on a tag on the side of the lift.

M SERIES PARTS LIST

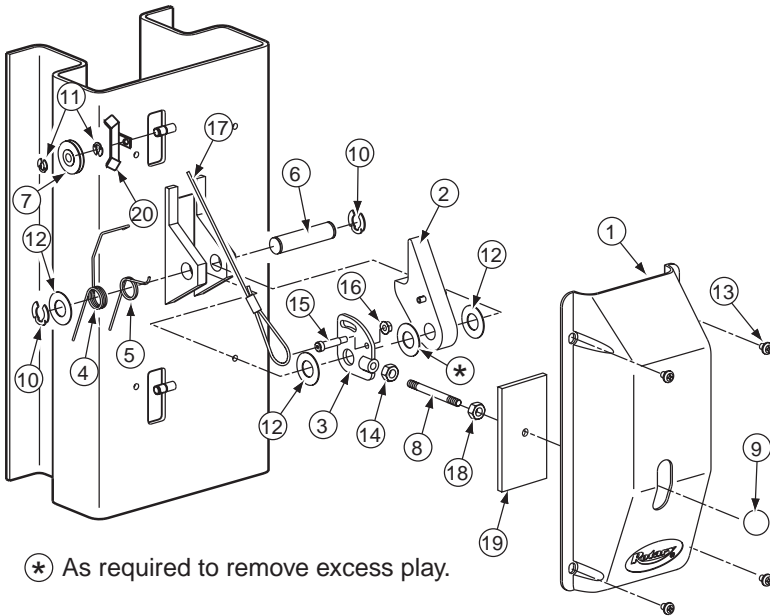


M SERIES PARTS LIST



CYLINDER ADAPTER/HOSE DETAIL PARTS LIST

Item	Description	Part No.
1	Straight Adapter	FJ7352-3

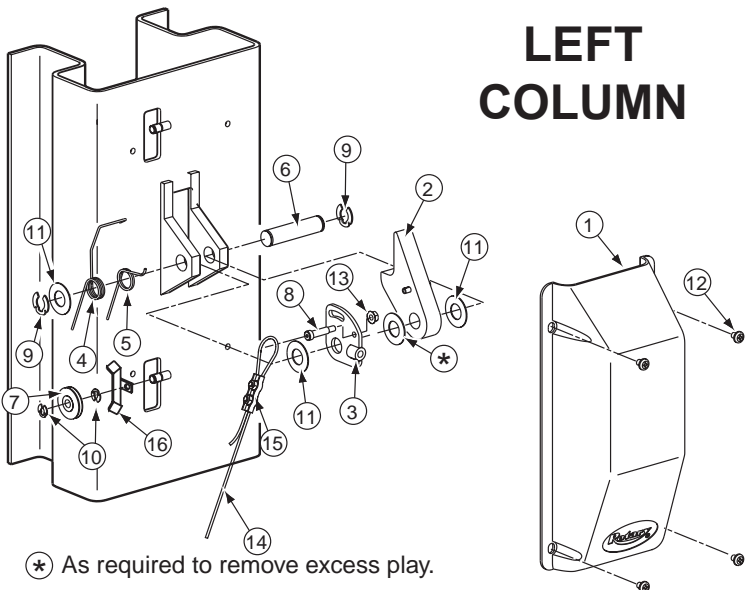


⊛ As required to remove excess play.

RIGHT COLUMN

LOCKING LATCH DETAIL PARTS LIST

Item	Description	Part No.
1	Control Side Cover	FJ7452
2	Locking Latch Dog	N616
3	Control Plate	FJ7594-2
4	Spring	FJ7566-10
5	Spring	FJ7382-9
6	Latch Shaft	FJ7382-34
7	Locking Latch Sheave	FJ7322
8	Handle	FJ7382-18
9	Ball Handle	FC134-91
10	Truarc Klipring #5304-75 (for 3/4" Shaft)	41411
11	Truarc Klipring #5304-37 (for 3/8" Shaft)	41410
12	1-1/2" O.D. x 3/4" I.D. x .045" Mach. Bush	41388
13	5/16"-18NC x 3/8" Lg. BHCS (Allen Socket)	N/A
14	3/8" - 16NC Hex Jam Nut	40658
15	Shoulder Bolt, 5/16"-20 NC x 1-1/4" ..	40220
16	Flanged Locknut, 1/4" - 20NC	41423
17	Locking Latch Cable	FJ7595-1
	EH-4 for SPO40	FJ7600
18	1/2"-13NC Jam Nut (Spacer)	40700
19	Slot Cover	N617
20	Latch Sheave Cover	N64



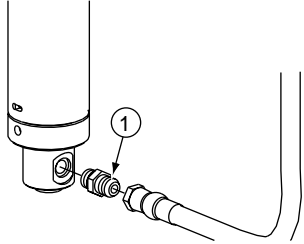
⊛ As required to remove excess play.

LEFT COLUMN

LOCKING LATCH DETAIL PARTS LIST

Item	Description	Part No.
1	Latch Cover	FJ7451
2	Locking Latch Dog	N616
3	Control Plate	FJ7594-2
4	Spring	FJ7566-10
5	Spring	FJ7382-9
6	Latch Shaft	FJ7382-34
7	Locking Latch Sheave	FJ7322
8	Shoulder Bolt 5/16"-20NC x 1-1/4"	40220
9	Truarc Klipring #5304-75 (for 3/4" Shaft)	41411
10	Truarc Klipring #5304-37 (for 3/8" Shaft)	41410
11	1-1/2" O.D. x 3/4" I.D. x .045" Mach. Bush	41388
12	5/16"-18NC x 3/8" Lg. BHCS (Allen Socket)	N/A
13	Flanged Locknut, 1/4" - 20NC	41423
14	Locking Latch Cable	FJ7595-1
	EH-4 for SPO40	FJ7600
15	Latch Cable Clamp	N63-1
16	Latch Sheave Cover	N64

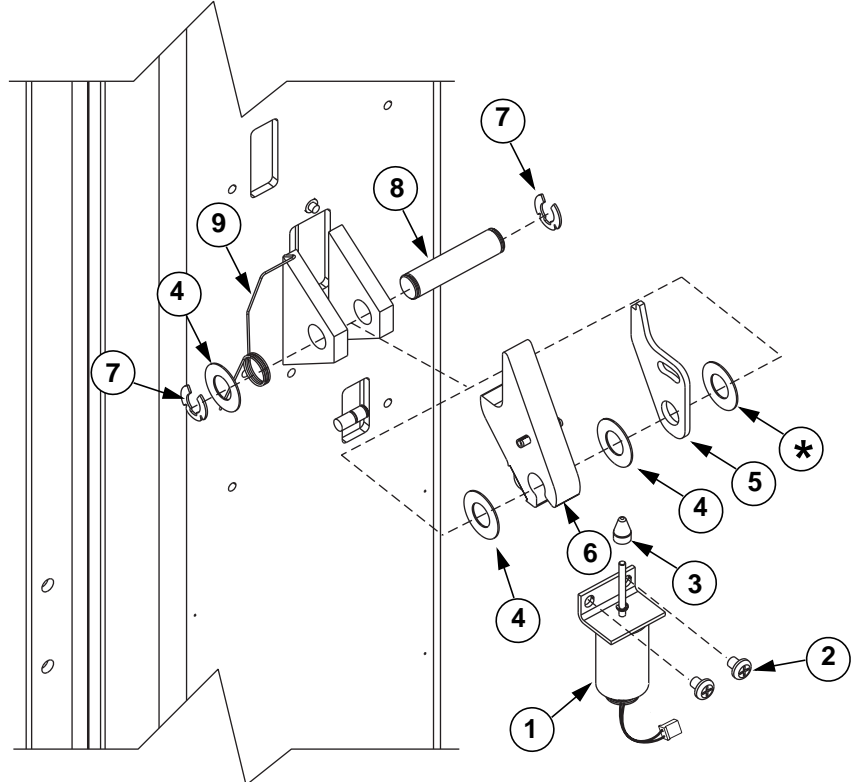
E AND I SERIES PARTS LIST



CYLINDER ADAPTER/HOSE DETAIL PARTS LIST

Item	Description	Part No.
1	Straight Adapter	FJ7352-3

SOLENOID / LOCKING LATCH ASSEMBLY



LOCKING LATCH DETAIL PARTS LIST

Item	Description	Part No.
1	Solenoid	N613
2	5/16" - 3/8" PHMS	40227
3	Slider	N613-1
4	1-1/2" O.D. x 3/4" I.D. x .045 Mach. Bush.	41388
5	Latch Control Plate	N613-3
6	Locking Latch	N613-4
7	Truarc Klipring #5304-75 (for 3/4" Shaft)	41411
8	Latch Shaft	FJ7382-34
9	Latch Spring	N613-2

E AND i SERIES PARTS LIST

1 L.H. Column	N752	41 Limit Switch	N411-1
2 R.H. Column	N752	42 3/8"-16NC Flanged Locknut	40664
3 R.H. Column Extension		43 Sheave Shaft	FJ7444-8
Standard Height	N470	44 Slider Block Shim	N115
EH-1 MODEL	N471	45 Male Extension With O-Ring	N332
EH-2 MODEL	N472	46 Hose Clip	N383
EH-4 MODEL (SPO40 Only)	N474	47 1/4"-20NC x 2-3/4" Hex Head Bolt	40114
L.H. Column Extension		48 1/4" Type A Flat Washer	40780
Standard Height	N485	49 Female Swivel Tee	N331
EH-1 MODEL	N486	50 Switch Bar Assembly	
EH-2 MODEL	N487	(SPOA30)	N415
EH-4 MODEL (SPO40 Only)	N489	(SPOA40/SPO40)	N467
4 Carriage Yoke	N822	51 3/8"-16NC x 1/2" Flanged HHCS	40122
5 Arm Pin	N2154	52 1/4"-20NC x 3/4" HHCS Grade 5	40104
6 1/4"-20NC Locknut	41423	53 1/4" External Tooth Lockwasher	40779
7 71"Hydraulic Cylinder	N382	54 1/4"-20NC Hex Nut	40627
*8 Power Unit		55 Limit Switch Assembly	N412
1Ø SPO40 (E model)	*P1445	56 3/8" External Tooth Lockwasher	40845
3Ø SPOA30 (E model)	*P1429	57 Spring Pin-1/4" dia. x 1-1/2" Lg. (Stainless)	14427
3Ø SPOA40/SPO40 (E model)	*P1165	58 Hose Grommet	FA7180-32
3Ø SPOA30 (S model)	*P1435	59 Screws for Control Panels And Tool Holders	
3Ø SPOA40/SPO40 (S model)	*P1437	5/16" - 3/8" PHMS	10 REQ'D
9 Power Unit Hose	N368	60 Wire Grommet	FA7180-31
10 5/16"-18NC x 1-1/2" HHCS (Full Thread)	40271	61 Mounting Bracket	N439
11 Vibration Pad	P1164-3	62 Lower Photosensor Bracket	N482
12 5/16"-18NC Hex Nut	40670	63 3/8"-16NC x 3/4" Carriage Bolts	N/A
13 Actuator Pin Handle	FJ7985-1	64 #12 Type B x 1/2"Lg. HWHTS	40057
14 Actuator Pin	N121-1	65 13" Bumper	FA950
15 Retaining Pin	N119-3	66 Lower Photosensor	N428-6
16 Arm Restraint Spring	FJ7656-2	67 Master Control Assembly	
17 Bleeder Screw (Specify Manufacturer)	N/A	1Ø/LCD	FA7307
18 Carriage Bumper	FA941	1Ø/Non-LCD	FA7306
19 Arm Restraint Pawl	N2121	3Ø/LCD	FA7303
20 Approach Bumper	FJ927-1	3Ø/Non-LCD	FA7302
21 5/8"-11NC Hex Lock Nut	40743	68 Slave Control Panel	FA7301
22 Truarc #5304-75 Klipping for 3/4" Shaft	41411	69 Air Tool Holder	FA5191
23 Sheave	N377	70 L.H. Overhead (Outer)	N480-1
24 Shim Kit	FA5112	71 R.H. Overhead (Inner)	N481-1
25 Sheave Cover	N119-1	72 Junction Box	FA925
26 1/4"-20NC x 3/8" Lg. PHMS Plated (2 pcs.)	40063	73 Slave Control Cable Extension	
27 Slider Block	FJ7360	EH-1 MODEL	FA7180-42
28 20mm Concrete Anchor	W140210	EH-2 MODEL	FA7180-43
29 1-1/2" O.D. x .760-.770" I.D. x .045" Bushing ..	41388	EH-4 MODEL (SPO40 Only)	FA7180-44
30 Wiring Chase	FA928	74 E-Stop Cables	
31 #8-32 Type B x 5/8" Lg. PHTS.	41457	1Ø Standard	FA7214-1
32 Web Cover	FA948	1Ø EH-1/EH-2 MODEL	FA7310
33 Spacer	FJ7871	1Ø EH-4 MODEL (SPO40 Only)	FA7311
34 Spotting Wheel Dish Kit	FF729	3Ø Standard	FA7212-2
35 N/A	N/A	3Ø EH-1/EH-2 MODEL	FA7212-7
36 3/8"-16 NC x 3/4" Long Flanged HHCS	40124	3Ø EH-4 MODEL (SPO40 Only)	FA7232-2
37 Overhead Hose			
Standard	N369		
EH-1/EH-2 MODEL	N371		
EH-4 MODEL (SPO40 Only)	N370		
38 Equalizer Cables			
SPOA30	N384		
SPOA30 EH-1 MODEL	N385		
SPOA30 EH-2 MODEL	N386		
SPOA40	N372		
SPOA40 EH-1 MODEL	N378		
SPOA40 EH-2 MODEL	N373		
SPO40	N374		
SPO40 EH-1 MODEL	N379		
SPO40 EH-2 MODEL	N375		
SPO40 EH-4 MODEL	N376		
39 Horse Shoe Shim	FJ716-6		
40 Front Shim	FJ659-3		

*Notes: E or S Model?

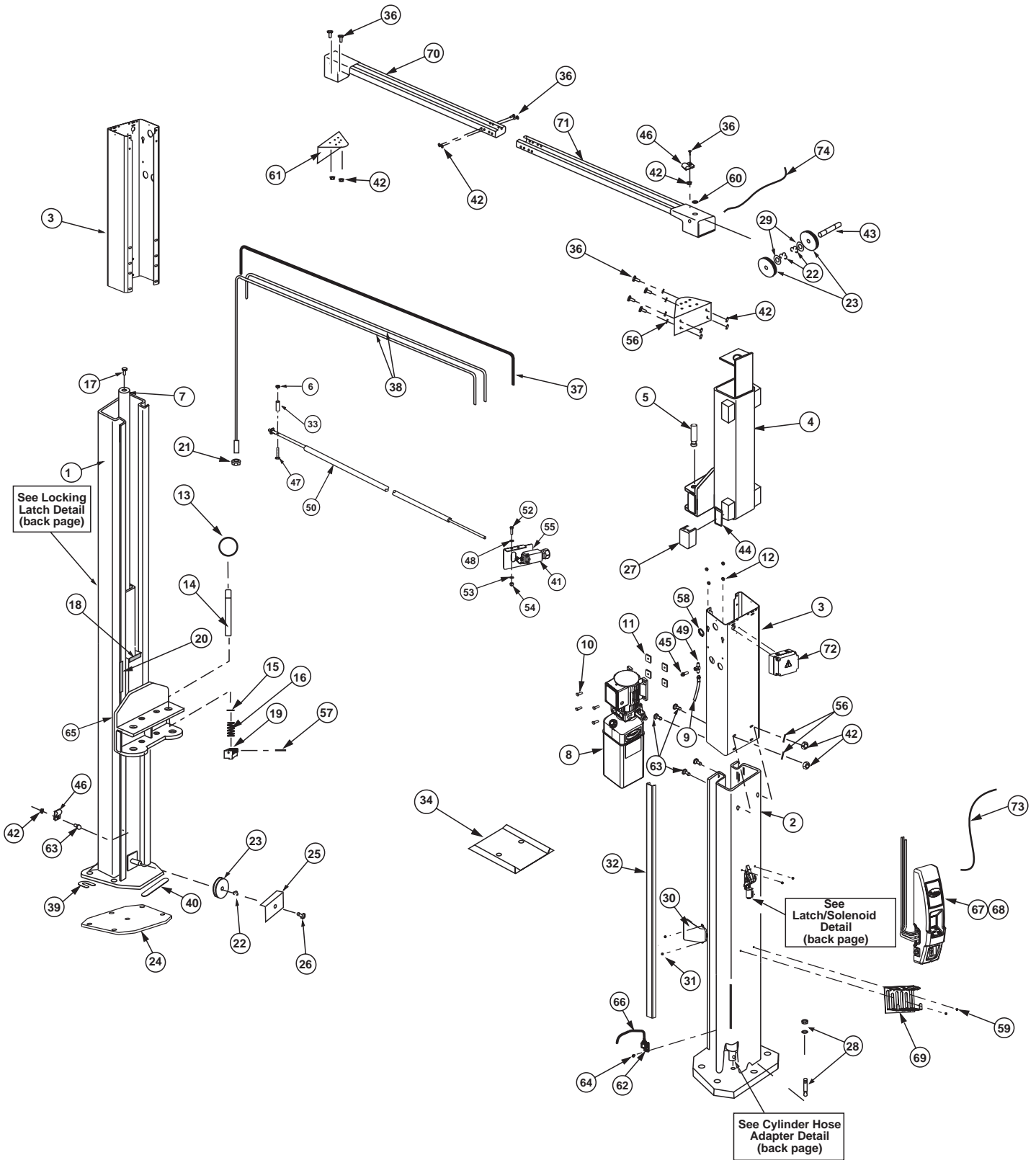
To find out if you have a **E or S** model Power Unit look at the **4th letter from the end** of your lift model number.

EXAMPLE: SPOA30**I**E585 would be a **E Model**.

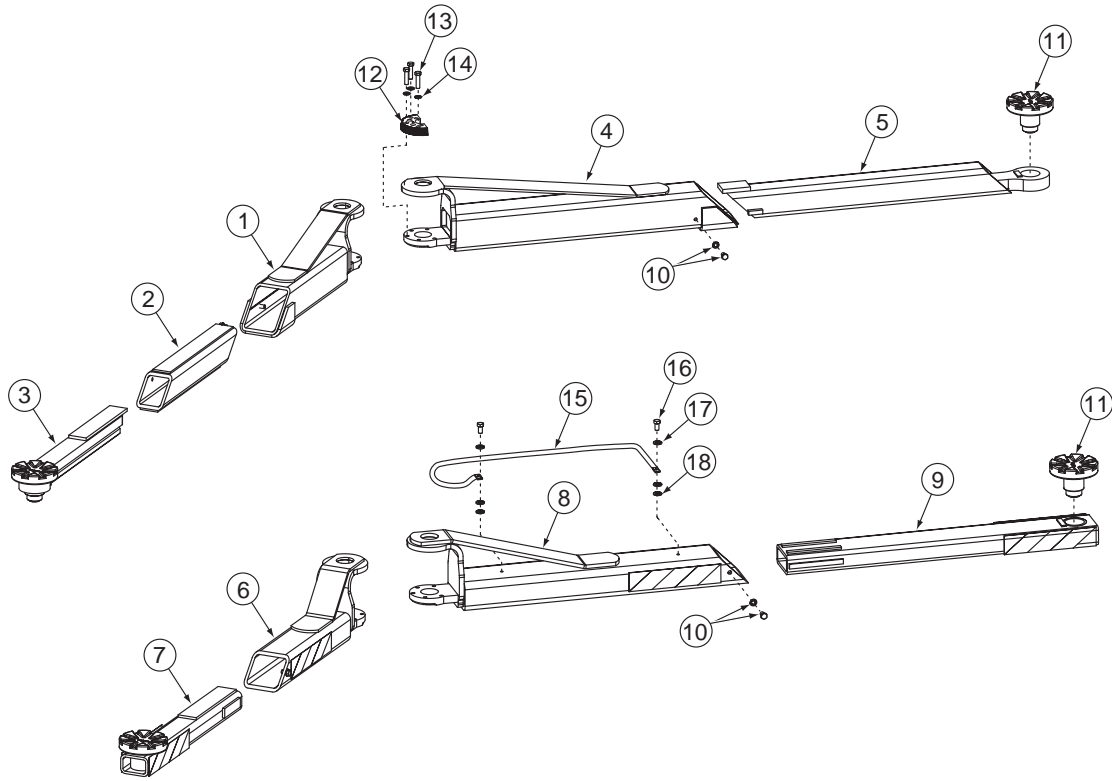


Model number can be found on a tag on the side of the lift.

E AND i SERIES PARTS LIST

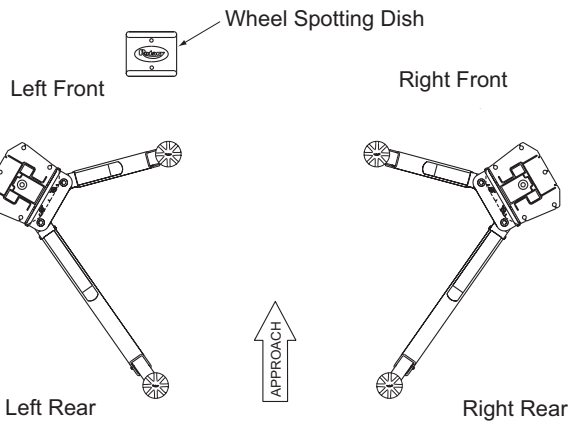


SPOA30/SPOA40/SPO40 ARM DETAIL



ARM DETAIL PARTS LIST

1	Front Outer 3-Stage Arm	
	SPOA30 (58X Series)	N2220-8
2	Front Middle 3-Stage Arm	
	SPOA30 (58X Series)	N2220-10
3	Front Inner 3-Stage Arm	
	SPOA30 (58X Series)	N2220-6
4	Rear Outer Arm	
	SPOA30 (58X Series)	N2221-3
5	Rear Inner Arm	
	SPOA30 (58X Series)	N2221-5
6	Front Outer Arm	
	SPOA30	N2190-1
	SPOA40	N2192-1
	SPO40	N2194-1
7	Front Inner Arm	
	SPOA30	N284-1
	SPOA40	N286-1
	SPO40	N288-1
8	Rear Outer Arm	
	SPOA30	N2191-1
	SPOA40	N2193-1
	SPO40	N2194-1
9	Rear Inner Arm	
	SPOA30	N285-1
	SPOA40	N287-1
	SPO40	N288-1



10	Stop Bolt Assembly	
	3/8" Internal Tooth Washer	40843
	3/8"-16NC x 5/8" Lg. HHCS Gr. 8, Plated	40155
11	Adapter Assembly	FJ6166
12	Restraint Gear	N2122
13	3/8"-16NC x 1-1/2" HHCS Gr. 5, Plated	40200
14	3/8" Medium Spring Lockwasher	40818
15	Arm Guard	
	SPOA30 (Rear)	N244-4
	SPOA40 (Rear)	N246-4
	SPO40 (Left Front/Right Rear/Left Rear)	N244-4
	SPO40 (Right Front)	N247-4
16	5/16"-18NC x 3/4" Lg. HHCS	40252
17	5/16" Medium Spring Lockwasher	40850
18	5/16" Flat Washer SAE Standard, Plated	40856

Rotary World Headquarters

2700 Lanier Drive
Madison, IN 47250, USA
www.rotarylif.com

North America Contact Information

Tech. Support: p 800.445.5438
f 800.578.5438
e userlink@rotarylif.com
Sales: p 800.640.5438
f 800.578.5438
e userlink@rotarylif.com

World Wide Contact Information

World Headquarters/USA: 1.812.273.1622
Canada: 1.905.812.9920
European Headquarters/Germany: +49.771.9233.0
United Kingdom: +44.178.747.7711
Australasia: +60.3.7660.0285
Latin America / Caribbean: +54.3488.431.608
Middle East / Africa: 1.812.273.1622



A DOVER COMPANY

